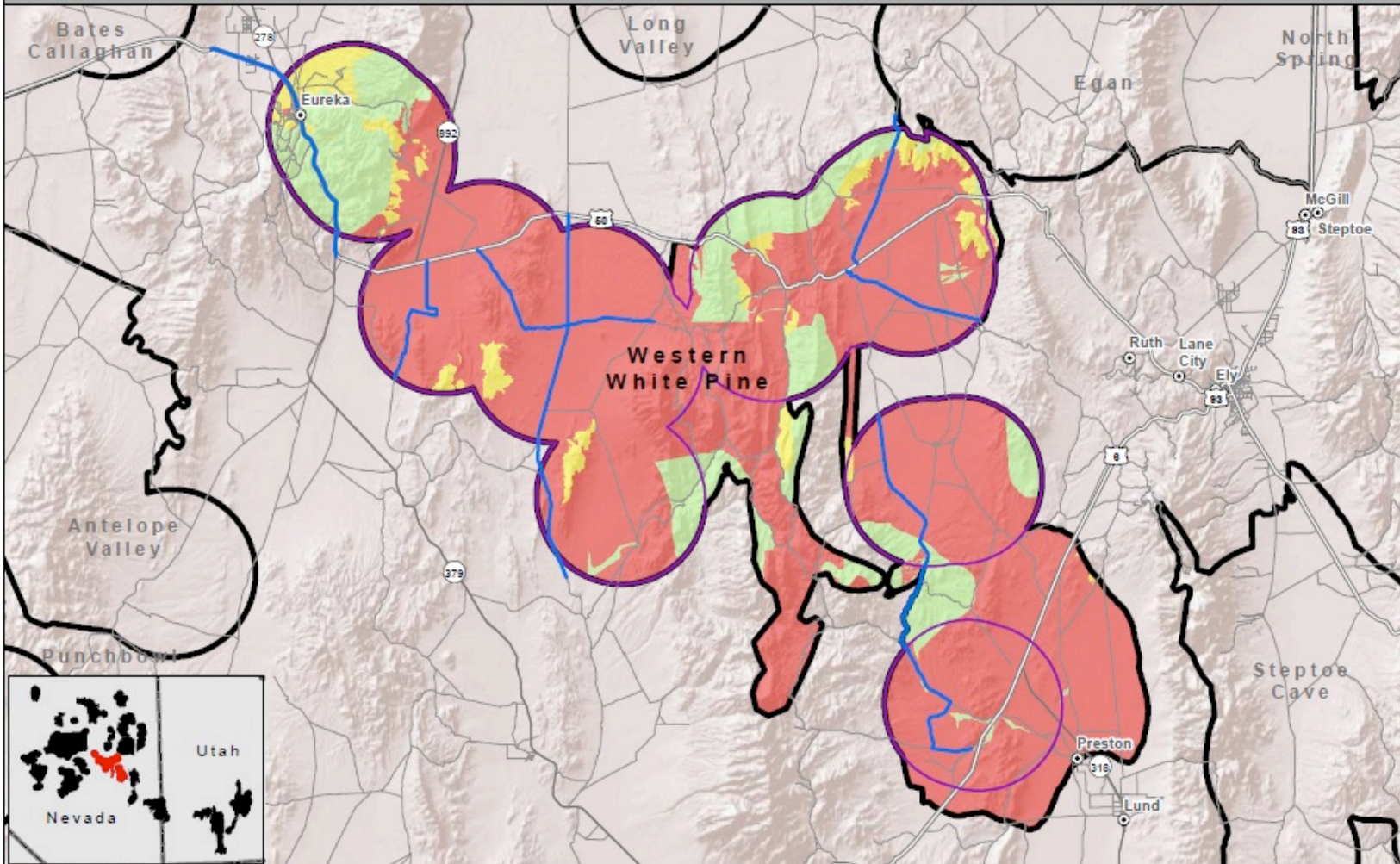


Fire Operations/ESR Priority & Fuels Management

Greater Sage-Grouse, Wildfire, Invasive Annual Grasses, and Conifer Expansion Assessments

Southern Great Basin
Bureau of Land Management
U.S. Department of the Interior



No Warranty is made by the Bureau of Land Management as to the accuracy, reliability, or completeness of these data for individual use or aggregate use with other data.



- Priority 1
- Priority 2
- Priority 3
- Fuel Break
- Project Planning Area
- Breeding Bird Density
- Interstate Hwy
- US Route
- State Route
- Local Roads
- State Boundary

Data Sources: Bureau of Land Management, ESRI Basedata
3/5/2015
1:535,820