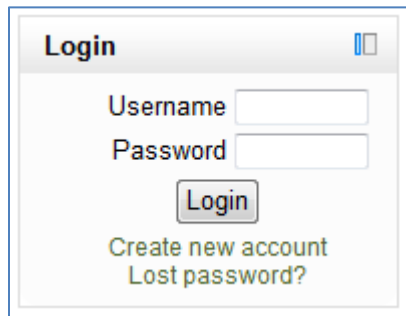


Step 1: Create a ConservationTraining.org Account

Before you are able to take any courses within ConservationTraining.org you must create a new account.

1. Browse to www.conservationtraining.org.
2. On the left, within the **Login** block, click **Create new account**.

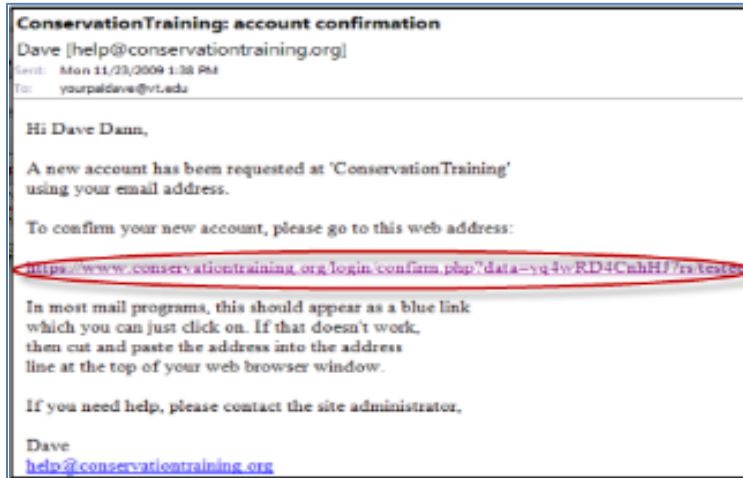
A screenshot of a web form titled "Login". The form contains two input fields: "Username" and "Password". Below the "Password" field is a "Login" button. At the bottom of the form, there are two links: "Create new account" and "Lost password?".

3. Complete all the required fields.
 - The Password field must contain at least 8 characters and at least 1 digit.
 - Please remember your username and password as these will be used to log into the system.
4. When finished, click **Create my new account**.
5. The **Confirm your account** page opens indicating that an email has been sent to the address provided. You will need to use this email to verify your account.
6. Click **Continue** to return to the home page.

Next, find the confirmation email that was sent by the system.

7. Open your email program and find the confirmation email from ConservationTraining.org.
 - Note, often email from ConservationTraining.org will get caught in your Spam or Junk folders. Please make sure to look in those folders.
 - If you cannot find this confirmation email please email help@conservationtraining.org and inform the administrator that the confirmation email did not come. The administrator will then manually confirm your account.

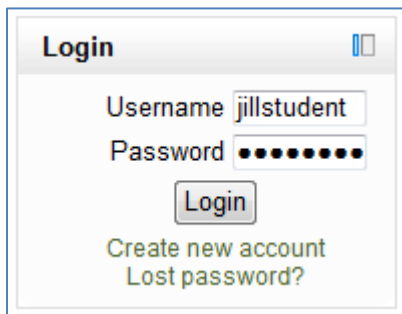
8. Within the email, click the link to confirm your account.



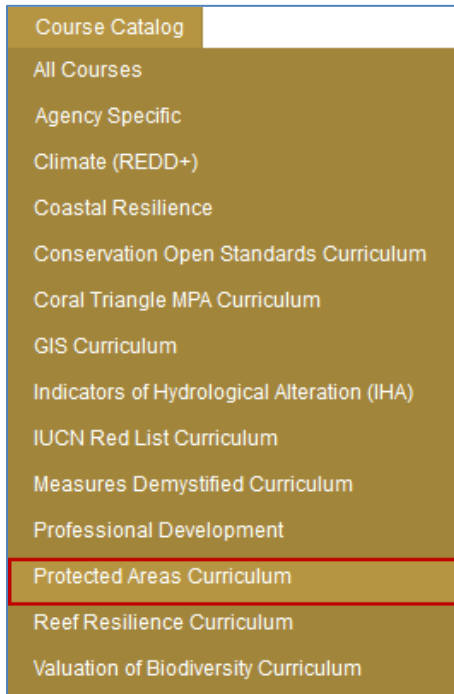
Step 2: Enroll in a PoWPA Module

Once your account has been created, you must login and enroll in a course.

1. Browse to www.conservationtraining.org.
2. On the left, within the **Login** block, enter your username and password.
3. Click **Login**.



4. In the site navigation, click **Catalog > Protected Areas Curriculum**.





This takes you to the PoWPA curriculum landing page. Here you can see all the available modules.

5. Find the module you wish to take and click **Enter Module**.

POWPA E-learning Curricula


The Convention on Biological Diversity (CBD) Secretariat has developed concise learning modules for each goal of the Programme of Work on Protected Areas. These modules are like short courses which take approximately an hour each, providing an overview of key terms, concepts, resources and approaches. Rollover each module below for a brief description.

Take a course today!
Just create an account on this site and click the "Enter Module" button below to enroll in any of the free PoWPA courses.
[Learn more >>](#)



Introductory Module


This module provides an introduction to the history, structure and elements of the Programme of work on Protected Areas.



Module 1: Protected area network design

This module covers aspects related to the design of a national protected area network (PoWPA Goal 1.1), including instructions on how to conduct an ecological gap assessment.


Enter Module



Module 2: Protected area integration

This module covers aspects related to integrating protected areas into the wider landscape, seascape and strategies (PoWPA Goal 1.1), including the development of conservation corridors, and mainstreaming protected areas into other sectors.

Enter Module



Module 3: Transboundary protected areas and regional networks

This module covers aspects related to transboundary protected areas and regional networks (PoWPA Goal 1.3), including the establishment, planning, management and assessment of transboundary areas.

Enter Module

1 2 3 4 5

6. Click **Enroll me** to enroll in the module.

You are now on the module home page. Here you will see a description of the module and the lessons for this module. Additionally on the right you can see links to a Syllabus, FAQs and Lesson Navigation. You can choose the language you wish to view the course in.

The screenshot shows the 'POWPA - Network Design' course page. The breadcrumb trail is 'Home > Courses > Protected Areas > PA Design'. The left sidebar contains a 'Choose your language:' section with options for English, Español, Français, Русский, and العربية. The main content area is titled 'Course Outline' and features 'Module 1: Protected Area Network Design.' with a detailed description, 'Learner Objectives', and a list of lessons. The lessons listed are: Lesson 1: Overview and Getting Started, Lesson 2: Assessing the Ecological and Protection Status, Lesson 3: Analyzing and Filling Gaps, and All Lessons (Arabic). Red boxes highlight the language selection area and the lessons list.

7. To begin the training, click on the link for the lesson.
 - Please note, you must have pop ups enabled for ConservationTraining.org in order to see these lessons (see Step 3).

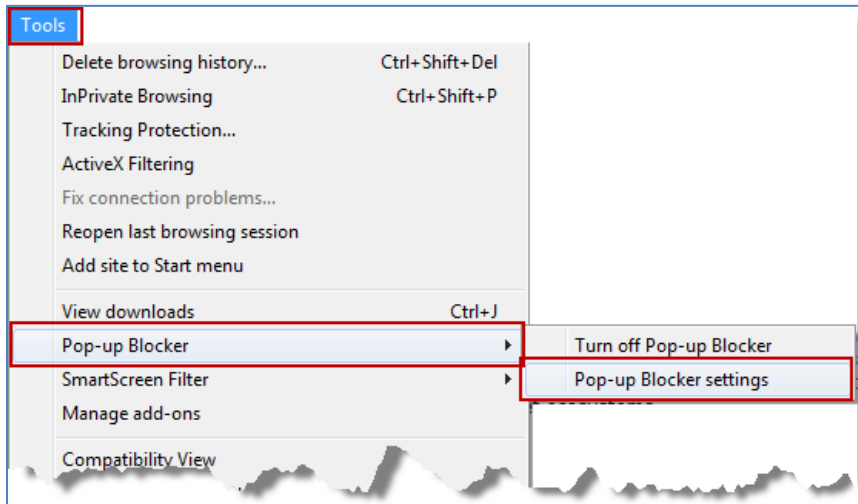
Step 3: Enable Pop-Ups

The lessons within the PoWPA curriculum will open in a pop-up. In order to view these lessons you must allow for pop-ups within your browser for ConservationTraining.org.

Internet Explorer

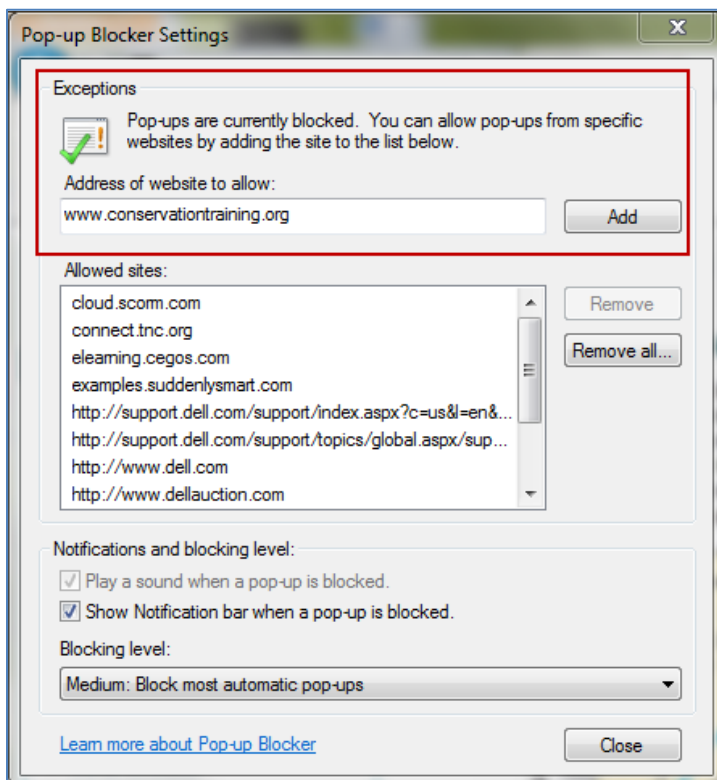
1. Open **Internet Explorer**.

- From the **Tools** menu, click **Pop-up Blocker > Pop-up Blocker settings**.



The Pop-up Blocker Settings dialog opens.

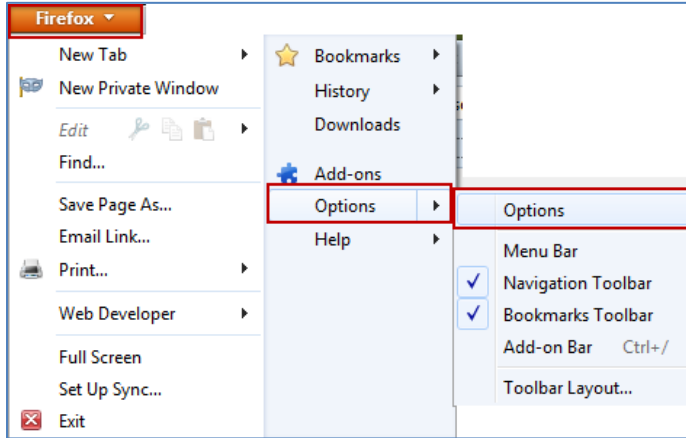
- For **Exceptions**, for **Address of website to allow**, type ***www.conservationtraining.org***.
- Click **Add**.



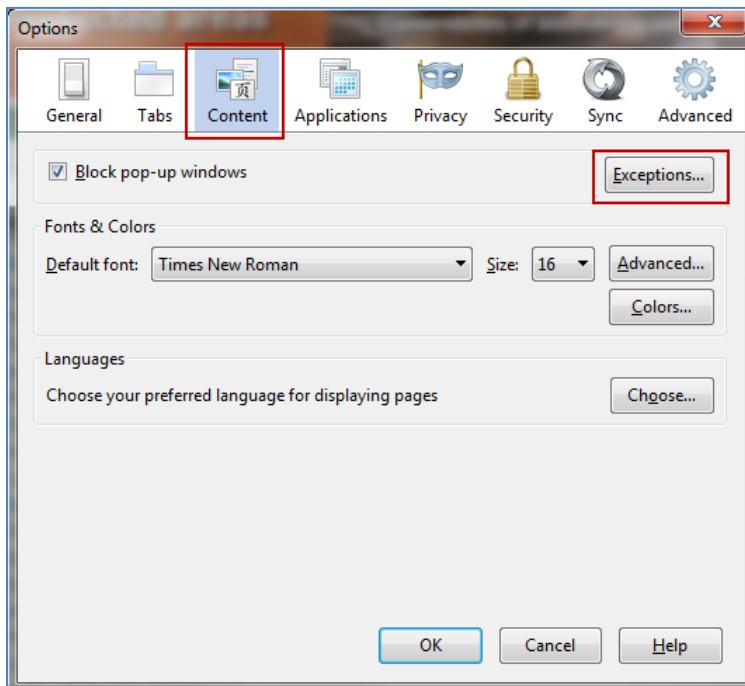
- Click **Close**.

Firefox

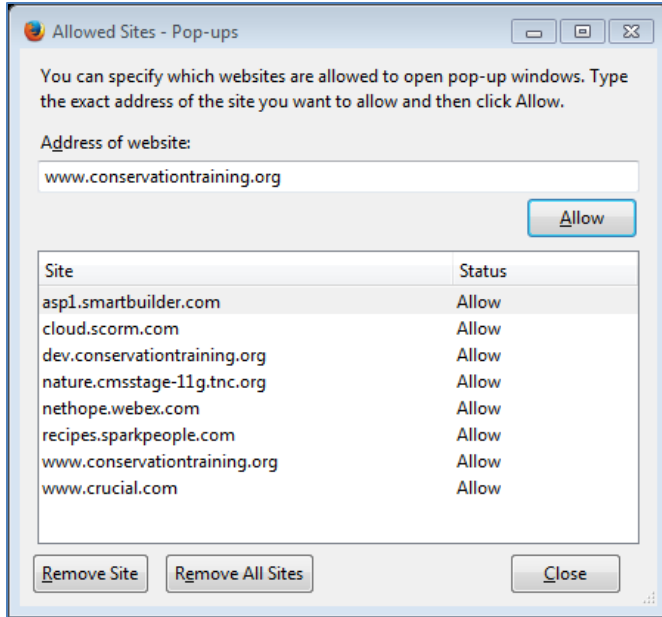
1. Open **Firefox**.
2. From the **Firefox** menu, click **Options > Options**.



3. Within the **Options** dialog, click **Content**.
4. For **Block pop-up windows**, click **Exceptions**.



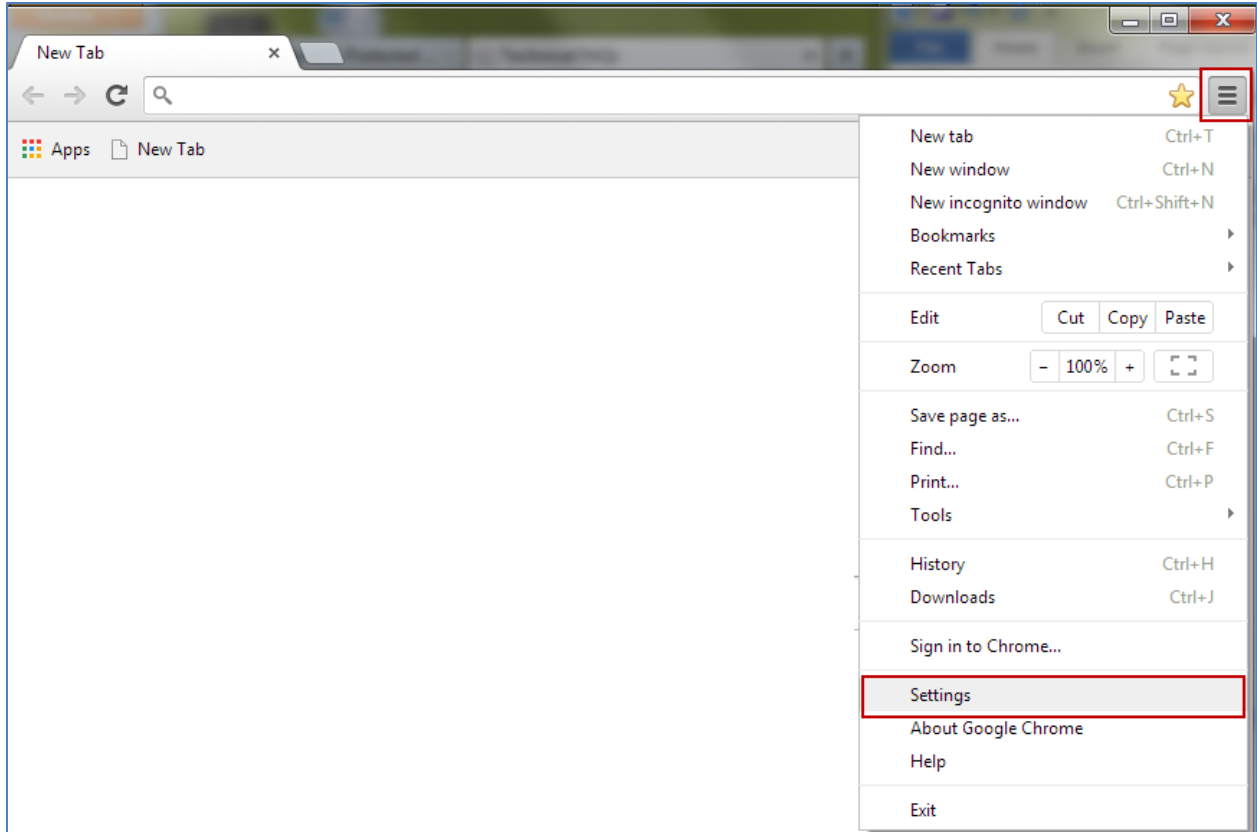
6. In the Allowed Sites – Pop-ups dialog, for Address of website, , type ***www.conservationtraining.org***.
7. Click **Allow**.



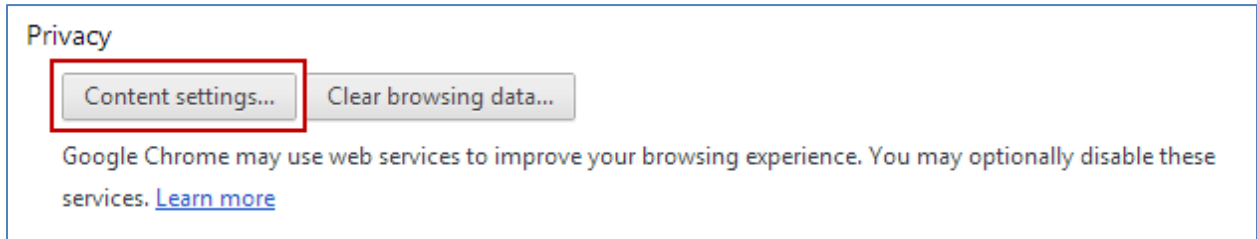
8. Click **Close**.
9. In the **Options** dialog, click **OK**.

Chrome

1. Open **Chrome**.
2. Click the **Customize** button and click **Settings**.

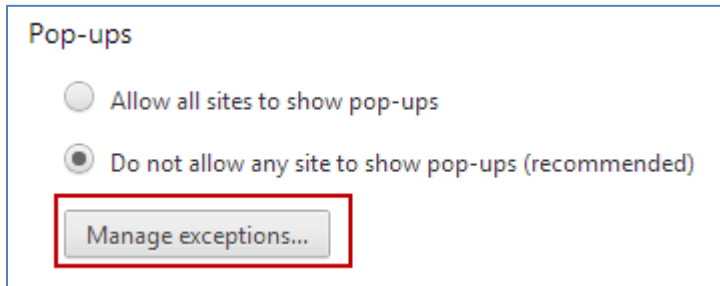


3. Within the Settings, scroll down and click **Show advanced settings**.
4. Under the **Privacy** section, click **Content Settings**.

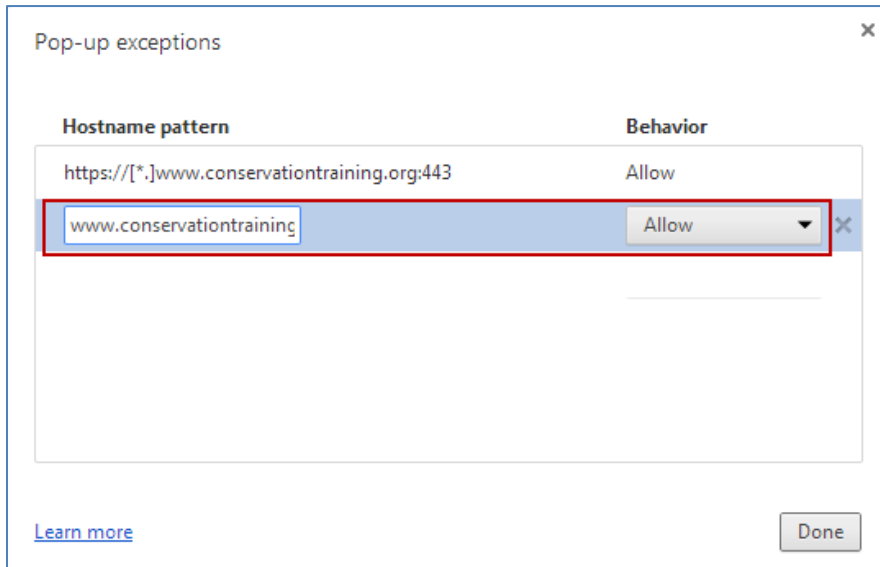


5. In **Content Settings**, scroll down to the **Pop-ups** section.

6. Click **Manage Exceptions**.



7. In the next empty text entry, type **www.conservationtraining.org** and click **Allow**.



8. Click **Done**.
9. In the **Content Settings** dialog, click **Done**.